

TUBE LIGHT LED TL30

Godox



TL30 TUBE LIGHT

A new addition to Godox tube light family, TL30. Featuring tube shape in light weight, it is portable and easy to use. Small as it is, great potentials to expect. Tons of colors in control for dynamic content creating.

Accessories like various couplers, waterproof bag, grid inspire extensive possibilities for the form, effect and even applicable environment of this light. You will enjoy the infinity that TL30 could be to enrich every shot.

A Liberating Light

TL30 weighs about 2 smartphones that you could barely feel it in bag, while tube shape saves the trouble for space taking. As on location or travelling studios, work with such portable light will be a liberating experience you have never had before.



0.3 kg

Weight

30 cm

Length

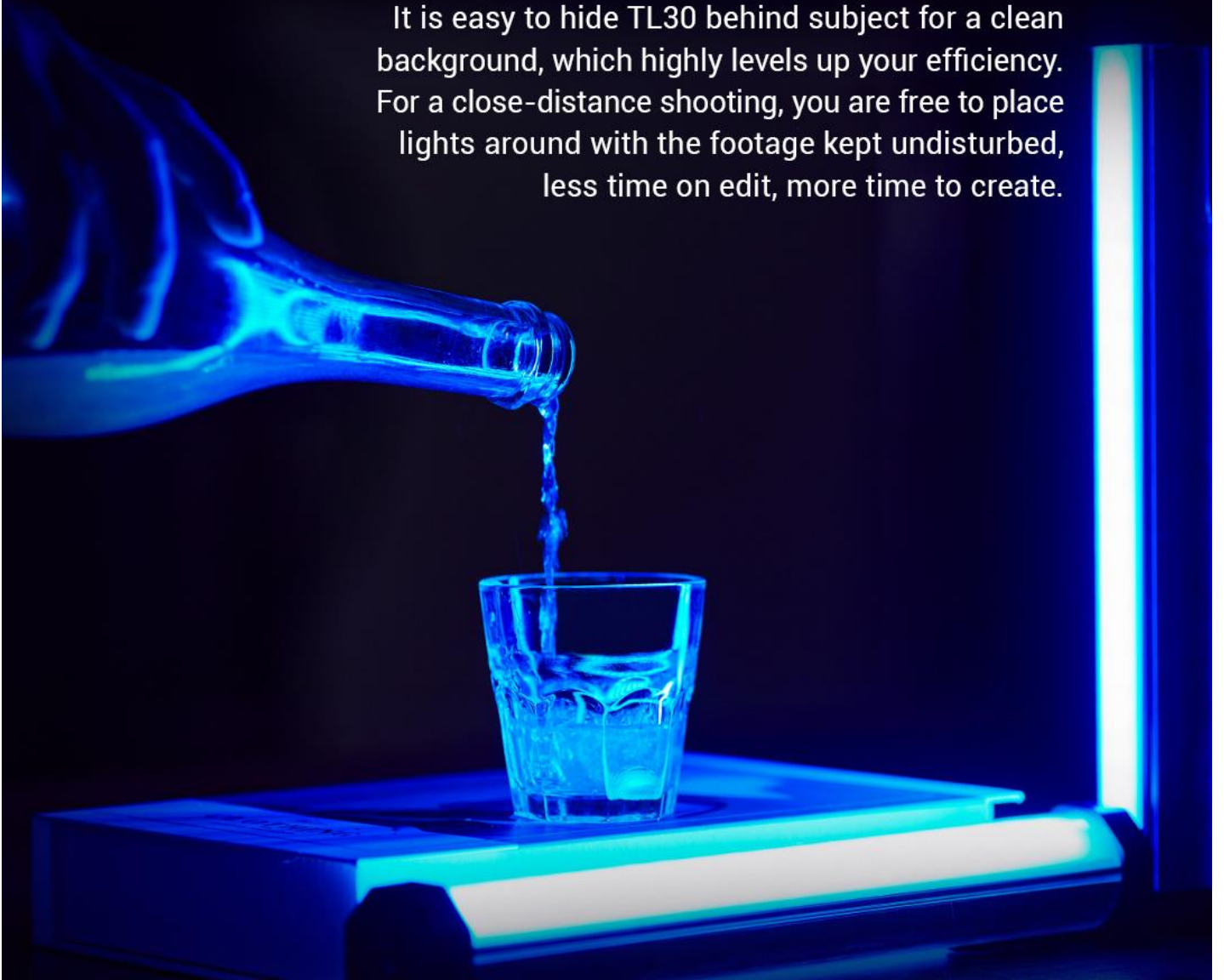


Fit Anywhere

With embedded magnet, just a metal surface is where TL30 can be attached. Screw hole at both ends for you to mount it on a stand. More convenience comes with it being freely placed in corner, against wall, or any narrow space for illumination. Almost fit anywhere, TL30 gets you the flexibility you want for shooting any place.

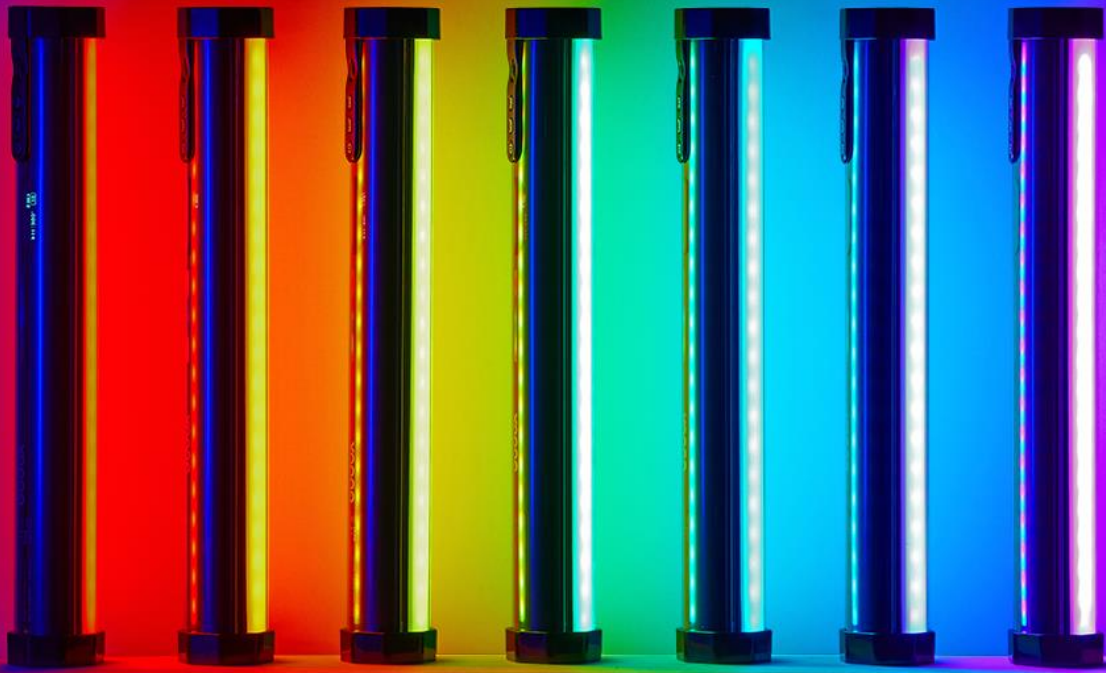
Light without Footprint

It is easy to hide TL30 behind subject for a clean background, which highly levels up your efficiency. For a close-distance shooting, you are free to place lights around with the footage kept undisturbed, less time on edit, more time to create.



A Color Library

Adjust in RGB, CCT, HSI three modes to reach up to 36000+ colors, with advanced G/M adjustment and 13 FX at three tunable levels. Just take this magic rainbow in your pocket.



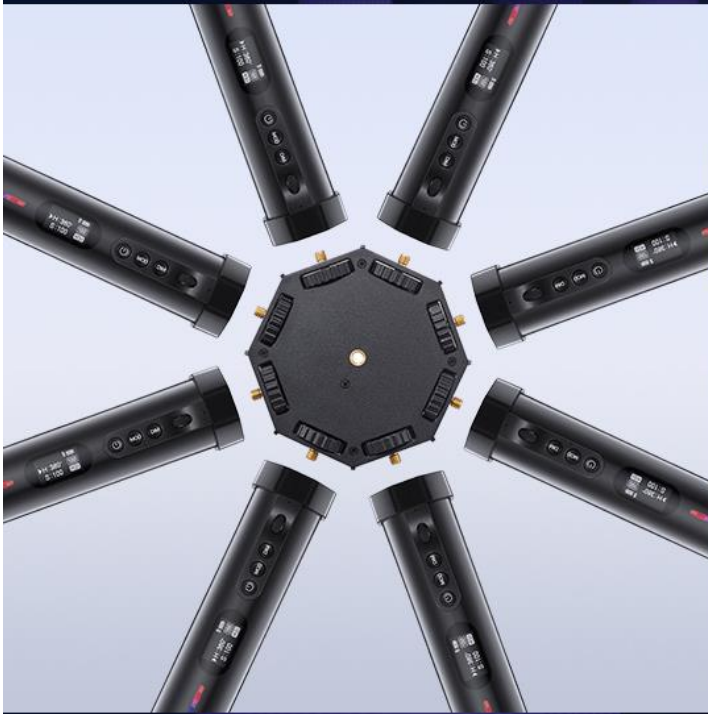
Reliable Color Rendering

With a CRI rating of 97 and a TLCI rating of 99, it delivers vibrant, natural light and reproduces accurate colors.

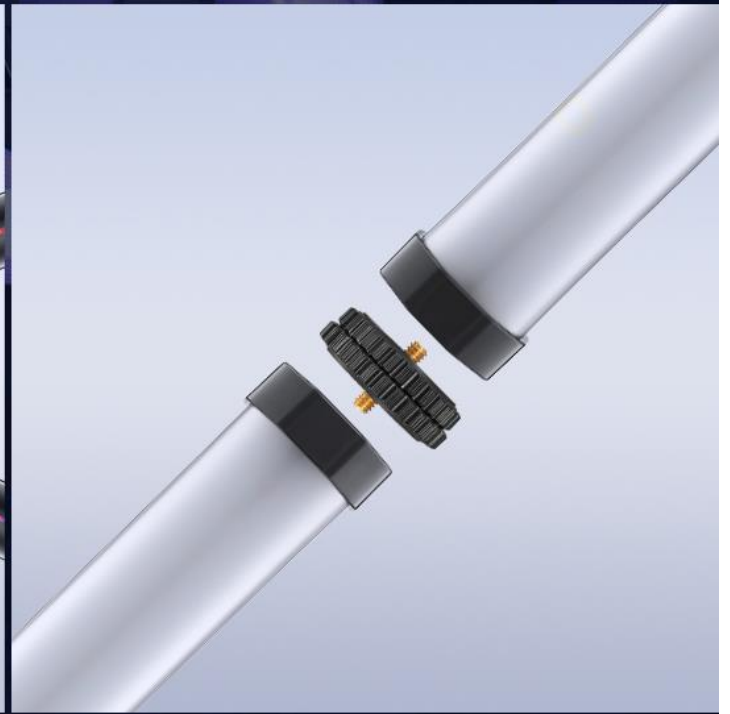
CRI
97+

TLCI
99+

Unlock a Wide Range of Functionality



TL-M8 8-light coupler



TL-M2 2-light coupler



TL-W30 Waterproof bag



TL-G30 Grid

Wireless Control



APP: Godox Light



Flexible Power Supply

With the charging port built at an end of it, you can use the light attached on while charging it for longtime lighting.



What's in the Box

TL30



Light Body	×1
Wrist Strap	×1
Metal Plates	×3
USB-C Power Cable	×1
Adhesive Hook & Loop	×3
Carry Bag	×1

Tech Specs

LED Light	TL30
Built-in Lithium Battery	3.6V/2900mAh/10.7Wh
Adapter	5V/2A (optional)
Output Power	Max. 8W
Color Temperature Range	2700K~6500K
Light Brightness Range	0%~100%
RGB Color Gamut	0 ~ 360°
100% Light Brightness (LUX)(≈)	740
CRI (≈)	97
TLCI (≈)	99
Duration(continuous output in 100% full power in 2700K or 6500K)	Approx. 60 minutes
Control Method	Smartphone APP
Bluetooth Wireless Control Distance	≈30m
Operation Temperature	-10~40 °C
Dimension	42*300MM
Net Weight	0.3kg
BT Frequency Range	2402.0-2480.0MHZ
Max. Transmitting Power	5dbm